



SUNJOULE™

Light Through Type of BIPV, which can generate Electricity

“SUNJOULE™” is glass/glass laminated module which appropriate clearance between the cells provides a shading effect to control the sunlight to a comfortable level. Tentatively called “SUNJOULE™-Fx2” has cells faced on both sides. It can generate higher electric power even modules are placed vertically. It is perfect for using as fences and glass screens and provides stylish looks more than ever.

PRODUCT DESCRIPTION

Feature	Light Through Type of BIPV, which can generate Electricity.
Applications	Windows Glass for Building, Glass Façade for Building, Glass Fence, Glass Louver and Top-Light etc.

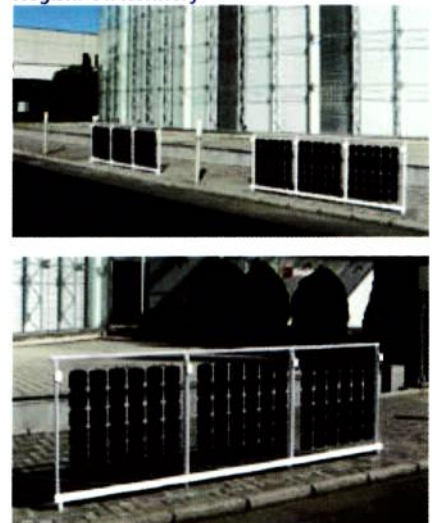
HULIC Hachioji Bldg



KITAMI SHINKIN BANK, Head Office



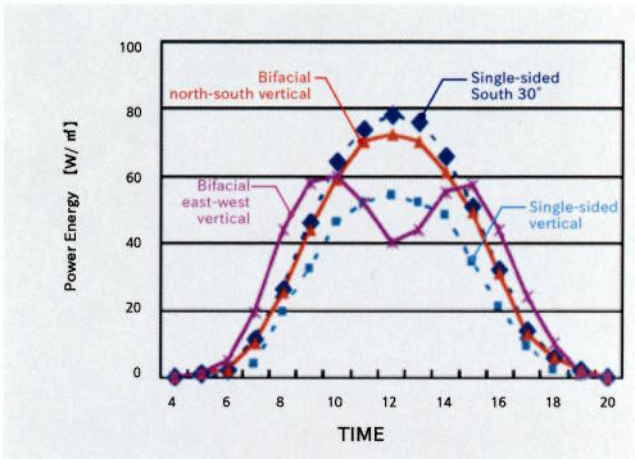
JX Nippon Oil & Energy Corporation, Negishi Oil Refinery



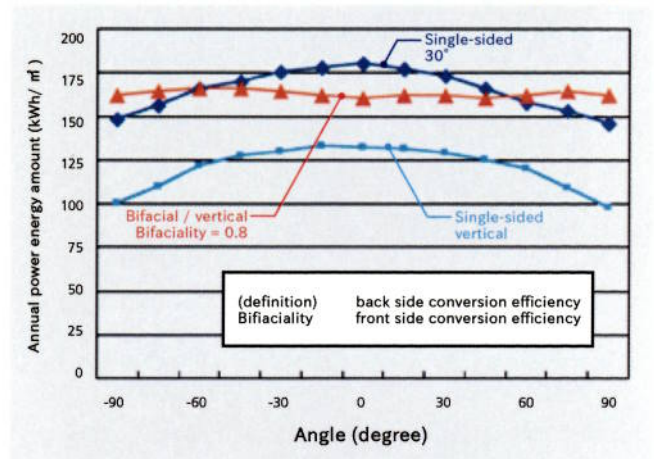
Provided by JX Nippon Oil & Energy Corporation

Data Sheet (Calculated Value)

Provided by Hitachi, Ltd.



Daily average of the power output distribution with the bifacial east-west vertical installation (calculated value)



Angle with the bifacial vertical installation (calculated value)

Reference : Nihon University Funabashi Campus



Reference : Tsuzuki Post Office



Reference : Keio University Hiyoshi Campus



Reference : Seitoku University (Matsudo City)

